

LED Flood Light

FL-07-G6



Better solutions for a Led Flood Light



IP65 water-proof



AC100-277V 50/60Hz

AC277-480V 50/60Hz



Easy Installation



140Lm/w

Operating Temp.: -40°C ~ +50°C

Storage Temp.: -40°C ~ +80°C

Options

Power

MEAN WELL DRIVER

HLG series A: Standard

HLG series B: Dimmable 1-10V

Color

3000K

4000K

5700K

Beam Angle

15°

30°



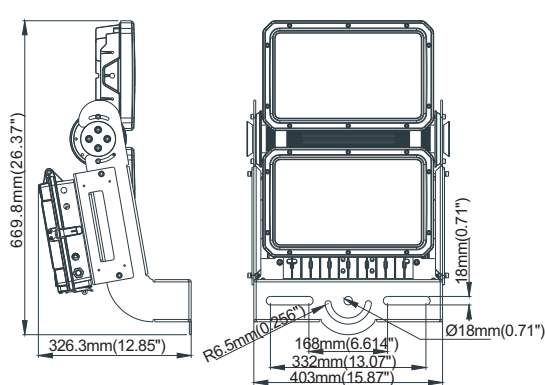
Application

Sports Lighting, Stadium lighting, Sports fields, Car parks, High mast installations Dock, railway and container yards, Ports and other large scale outdoor applications, Architectural lighting, Landscape lighting, Industrial and commercial exterior lighting Decorative lighting for holidays, tradeshow, exhibitions.

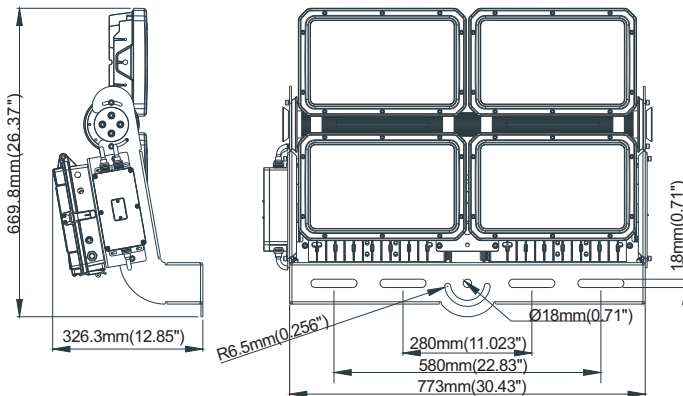
Specifications

Item	Power	Luminous Efficacy	Leds	CRI	Weight	Beam Angle
BR-FL400W-07-G6	400W	140lm/W	LUMILEDS 5050	>70	22kg	15°/30°
BR-FL500W-07-G6	500W	140lm/W	LUMILEDS 5050	>70	22kg	15°/30°
BR-FL800W-07-G6	800W	140lm/W	LUMILEDS 5050	>70	40.5kg	15°/30°
BR-FL1000W-07-G6	1000W	140lm/W	LUMILEDS 5050	>70	40.5kg	15°/30°

Dimensions(mm)

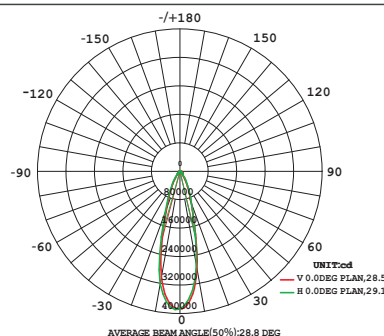


400W/500W



800W/1000W

Photometry



15°

30°

FL-07-G6

Model Options

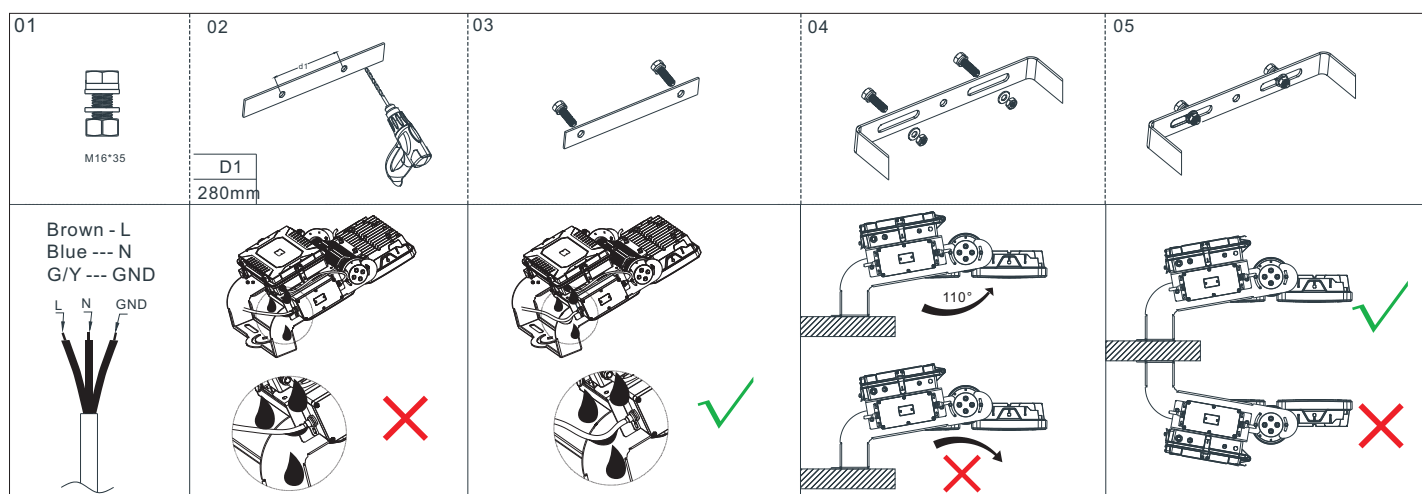


400W/500W



800W/1000W

Installation and use



Aiming Position Light



Packing Spec

Item	Box			Carton		
	Measurement(mm)	Gross weight	Pcs/box	Measurement(mm)	Gross weight	Pcs/box
BR-FL400W/500W-07-G6	L755*W525*H295	24kg	1	/	/	/
BR-FL800W/1000W-07-G6	L895*W755*H295	42.8kg	1	/	/	/